

Building Data Summary

Project ID:	Single Family Homes
Location:	*****
Scope of Work:	Lumber Breakdown - Rough framing
Date:	01/12/2025

Item #	Ref. Sheet #	Item Description	Unit	Quantity	Wastage	Quantity with Wastage
DIVISION 06- WOOD, PLASTIC & COMPOSITES						
House 1						
1st Floor						
Wall Type "Exterior" As; (131 LF, 9'-6" H)						
1		(2"x6") Wood Studs @ 16" O.C.	EA	99	0%	99
2		(4'x8') Plywood Sheathing - 1245 SF	EA	39	0%	39
3		(2"x6") Top & Bottom Plate - 10'L	LF	39	0%	39
Wall Type "Interior" As; (90 LF, 8'-6" H)						
4		(2"x4") Wood Studs @ 16" O.C.	EA	69	0%	69
5		(2"x4") Top & Bottom Plate - 10' L	EA	27	0%	27
2nd Floor						
Post						
6		4x6 Post 9' H	EA	14	0%	14
7		6x8 Post 9' H	EA	5	0%	5
8		6x6 Post 9' H	EA	5	0%	5
9		4x8 Post 9' H	EA	1	0%	1
10		2x6 Post 9' H	EA	21	0%	21
11		4x4 Post 9' H	EA	6	0%	6
Joist						
12		14" TJI 560 Floor Joist 16" O.C - 821 SF	LF	648	0%	648
13		14" TJI 560 Floor Joist 16" O.C - 8' L	EA	3	0%	3
14		14" TJI 560 Floor Joist 16" O.C - 18' L	EA	7	0%	7
15		14" TJI 560 Floor Joist 16" O.C - 20' L	EA	7	0%	7
16		14" TJI 560 Floor Joist 16" O.C - 22' L	EA	8	0%	8
17		14" TJI 560 Floor Joist 16" O.C - 26' L	EA	7	0%	7
18		14" TJI 210 Floor Joist 16" O.C - 118 SF	LF	100	0%	100
19		Standard Joist @ 6'	EA	5	0%	5
20		Standard Joist @ 14'	EA	5	0%	5
Beam						
1-3/4"x14" LSL Beam						
21		1-3/4"x14" LSL Beam - 16'-6" L	EA	1	0%	1
22		1-3/4"x14" LVL Beam - 7' L	EA	2	0%	2
2"x8" Beam						
23		2"x8" Beam - 5' L	EA	2	0%	2
4"x12" Beam						
24		4"x12" Beam - 6' L	EA	1	0%	1
5-1/4"x11-7/8" PSL Beam						
25		5-1/4"x11-7/8" PSL Beam - 8' L	EA	1	0%	1
5-1/4"x14" PSL Beam						
26		5-1/4"x14" PSL Beam - 34' L	EA	1	0%	1
6"x12" Beam						
27		6"x12" Beam - 9' L	EA	1	0%	1
6"x14" Flush Beam						
28		6"x14" Flush Beam - 7' L	EA	1	0%	1
7"x14" PSL Beam						
29		7"x14" PSL Beam - 10'-6" L	EA	1	0%	1
Header						
6x12 Header						
30		6x8 Header 3' L	EA	4	0%	4
31		6x8 Header 6' L	EA	1	0%	1
6x12 Header						
32		6x12 Header 3' L	EA	1	0%	1
33		6x12 Header 6' L	EA	1	0%	1
Sheathing						

Building Data Summary

Project ID:	Single Family Homes
Location:	*****
Scope of Work:	Lumber Breakdown - Rough framing
Date:	01/12/2025

Item #	Ref. Sheet #	Item Description	Unit	Quantity	Wastage	Quantity with Wastage
34		(1/2") 4'x8' Plywood Sheathing @ Shear Wall - 936 SF	EA	29	0%	29
35		(5/8") 4'x8' Plywood Sheathing @ Shear Wall - 63 SF	EA	2	0%	2
		3rd Floor				
		Wall Type "Exterior" As; (89 LF, 8'-6" H)				
36		(2"x6") Wood Studs @ 16" O.C.	EA	68	0%	68
37		(4'x8') Plywood Sheathing - 757 SF	EA	24	0%	24
38		(2"x6") Top & Bottom Plate	EA	27	0%	27
		Wall Type "Interior" As; (64 LF, 8'-6" H)				
39		(2"x4") Wood Studs @ 16" O.C.	EA	49	0%	49
40		(2"x4") Top & Bottom Plate - 10' L	EA	19	0%	19
		Rail Cap				
41		2X Guard Rail Cap - 10' L	EA	16	0%	16
		Post				
42		2x4 Post 8'-6"H	EA	2	0%	2
43		2x6 Post 8'-6"H	EA	25	0%	25
44		4x4 Post 8'-6" H	EA	1	0%	1
45		4x6 Post 8'-6" H	EA	12	0%	12
46		6x6 Post 8'-6" H	EA	2	0%	2
47		6x8 Post 8'-6"H	EA	2	0%	2
		Joist				
48		2x10 Deck Joist @ 16" O.C - 323 SF	LF	268	0%	268
49		2x10 Deck Joist @ 16" O.C - 20' L	EA	19	0%	19
50		2x10 Deck Joist @ 16" O.C - 22' L	EA	7	0%	7
51		14" TJI 210 Floor Joist 16" O.C - 372 SF	LF	306	0%	306
52		14" TJI 210 Floor Joist 16" O.C - 18' L	EA	7	0%	7
53		14" TJI 210 Floor Joist 16" O.C - 20' L	EA	9	0%	9
54		14" TJI Floor Joist @ 16" O.C - 98 SF	LF	70	0%	70
55		14" TJI Floor Joist @ 16" O.C - 14' L	EA	5	0%	5
		Beam				
		10"x10" Beam				
56		10"x10" Beam - 9' L	EA	1	0%	1
		2"x10" Beam				
57		2x10 Beam - 9' L	EA	2	0%	2
		10-3/4"x13-1/2" Beam				
58		10-3/4"x13-1/2" Beam - 20'	EA	1	0%	1
		6"x14" Beam				
59		6"x14" Beam - 13' L	EA	1	0%	1
		5-1/4"x14" PSL Beam				
60		5-1/4"x14" PSL Beam - 21' L	EA	1	0%	1
		3-1/2"x14" PSL Beam				
61		3-1/2"x14" PSL Beam - 12' L	EA	1	0%	1
		1-3/4"x14" LVL Beam				
62		1-3/4"x14" LVL Beam - 7' L	EA	2	0%	2
		5-1/4"x14" PSL Beam				
63		5-1/4"x14" PSL Beam - 8' L	EA	1	0%	1
		Header				
		6x8 Header				
64		6x8 Header - 3' L	EA	7	0%	7
65		6x8 Header - 7' L	EA	1	0%	1
66		6x8 Header - 4' L	EA	1	0%	1
67		6x8 Header - 5' L	EA	1	0%	1
		6x10 Header	LF	9	0%	9
69		6x10 Header - 9' L	EA	1	0%	1
		Sheathing				

Building Data Summary

Project ID:	Single Family Homes
Location:	*****
Scope of Work:	Lumber Breakdown - Rough framing
Date:	01/12/2025

Item #	Ref. Sheet #	Item Description	Unit	Quantity	Wastage	Quantity with Wastage
70		(1/2") 4'x8' Plywood Sheathing @ Shear Wall - 810 SF	EA	25	0%	25
71		(5/8") 4'x8' Plywood Sheathing @ Shear Wall - 36 SF	EA	1	0%	1
Roof Framing						
Post						
72		4x4 Post 8'-6" H	EA	2	0%	2
73		4x6 Post 8'-6"H	EA	12	0%	12
Beam						
1-3/4"x11-7/8" LSL Beam						
74		1-3/4"x11-7/8" LSL Beam - 14' L	EA	2	0%	2
Header						
6x8 Header						
75		6x8 Header - 2' L	EA	1	0%	1
76		6x8 Header - 4' L	EA	4	0%	4
77		6x8 Header - 8' L	EA	1	0%	1
78		6x8 Header - 10' L	EA	1	0%	1
6x10 Header						
79		6x10 Header - 6' L	EA	2	0%	2
Rafter						
1-3/4"x11-7/8" LVL Roof Rafter @ 12" O.C - 406 SF						
80		1-3/4"x11-7/8" LVL Roof Rafter @ 12" O.C - 18' L	LF	306	0%	306
81		1-3/4"x11-7/8" LVL Roof Rafter @ 12" O.C - 18' L	EA	17	0%	17
1-3/4" x11-7/8" LVL Roof Rafter @ 24" O.C - 242 SF						
82		1-3/4" x11-7/8" LVL Roof Rafter @ 24" O.C - 24' L	LF	130	0%	130
83		1-3/4" x11-7/8" LVL Roof Rafter @ 24" O.C - 26' L	EA	5	0%	5
Sheathing						
84		(1/2") 4'x8' Plywood Sheathing @ Shear Wall - 468 SF	EA	15	0%	15
1st Floor						
Wall Type "Exterior" As; (166 LF, 8'-6" H)						
85		(2"x6") Wood Studs @ 16" O.C.	EA	126	0%	126
86		(4'x8') Plywood Sheathing - 1411 SF	EA	44	0%	44
87		(2"x6") Top & Bottom Plate - 10' L	LF	498	0%	498
Wall Type "Interior" As; (34 LF, 8'-6" H)						
88		(2"x6") Wood Studs @ 16" O.C.	EA	27	0%	27
89		(2"x6") Top & Bottom Plate - 10' L	EA	10	0%	10
Wall Type "Interior" As; (101 LF, 8'-6" H)						
90		(2"x4") Wood Studs @ 16" O.C.	EA	77	0%	77
91		(2"x4") Top & Bottom Plate - 10' L	EA	30	0%	30
2nd Floor						
Wall Type "Exterior" As; (157 LF, 9'-6" H)						
92		(2"x6") Wood Studs @ 16" O.C.	EA	119	0%	119
93		(4'x8") Plywood Sheathing - 1492 SF	EA	46.609375	0%	47
94		(2"x6") Top & Bottom Plate - 10' L	EA	47	0%	47
Wall Type "Interior" As; (70 LF, 9'-6" H)						
95		(2"x4") Wood Studs @ 16" O.C.	EA	77	0%	77
96		(2"x4") Top & Bottom Plate - 10' L	EA	21	0%	21
Wall Type "Interior" As; (7 LF, 9'-6" H)						
97		(2"x6") Wood Studs @ 16" O.C.	EA	2	0%	2
98		(2"x6") Top & Bottom Plate - 10' L	EA	2	0%	2
Post						
99		6x6 Post 9'-6"H	EA	2	0%	2
100		4x6 Post 9'-6"H	EA	22	0%	22
101		6x8 Post 9'-6"H	EA	7	0%	7
102		4x4 Post 9'-6"H	EA	6	0%	6
103		4x8 Post 9'-6"H	EA	1	0%	1
104		2x6 Post 9'-6"H	EA	16	0%	16

Building Data Summary

Project ID:	Single Family Homes
Location:	*****
Scope of Work:	Lumber Breakdown - Rough framing
Date:	01/12/2025

Item #	Ref. Sheet #	Item Description	Unit	Quantity	Wastage	Quantity with Wastage
105		2x4 Post 9'-6"H	EA	4	0%	4
		Joist				
106		14" TJI 560 Floor Joist @ 16" O.C - 836 SF	LF	661	0%	661
107		14" TJI 560 Floor Joist @ 16" O.C - 5' L	EA	6	0%	6
108		14" TJI 560 Floor Joist @ 16" O.C - 10' L	EA	6	0%	6
109		14" TJI 560 Floor Joist @ 16" O.C - 12' L	EA	2	0%	2
110		14" TJI 560 Floor Joist @ 16" O.C - 23' L	EA	5	0%	5
111		14" TJI 560 Floor Joist @ 16" O.C - 24' L	EA	18	0%	18
112		14" TJI 210 Floor Joist @ 16" O.C - 199 SF	LF	156	0%	156
113		14" TJI 210 Floor Joist @ 16" O.C - 13' L	EA	12	0%	12
114		2"x10" Deck Joist @ 16" O.C - 160 SF	LF	132	0%	132
115		2"x10" Deck Joist @ 16" O.C - 13' L	EA	12	0%	12
116		2"x14" Ceiling Joist @ 24" O.C - 62 SF	LF	32	0%	32
117		2"x14" Ceiling Joist @ 24" O.C - 4' L	EA	8	0%	8
		Beam				
		6"x14" Flush Beam				
118		6"x14" Flush Beam - 7' L	EA	1	0%	1
		1-3/4"x14" LVL Beam				
119		1-3/4"x14" LVL Beam - 7' L	EA	2	0%	2
120		1-3/4"x14" LVL Beam - 12' L	EA	2	0%	2
		3-1/2"x14" PSL Beam				
121		1-3/2"x14" LVL Beam - 24' L	EA	1	0%	1
		3-1/2" LSL Beam				
122		3-1/2" LSL Beam - 7' L	EA	2	0%	2
		8"x14" Beam				
123		8"x14" Beam - 26' L	EA	1	0%	1
124		8"x14" Beam - 10' L	EA	1	0%	1
		7"x14" Beam				
125		7"x14" Beam 13' L	EA	1	0%	1
126		7"x14" Beam 23' L	EA	1	0%	1
		5-1/4"x11-7/8" PSL Beam				
127		5-1/4"x11-7/8" PSL Beam - 10' L	EA	1	0%	1
		5-1/4"x9-1/2" PSL Beam				
128		5-1/4"x9-1/2" PSL Beam - 16' L	EA	1	0%	1
		Header				
		6x8 Header				
129		6x8 Header - 3' L	EA	6	0%	6
130		6x8 Header - 2' L	EA	1	0%	1
131		6x8 Header - 4' L	EA	2	0%	2
132		6x8 Header - 7' L	EA	1	0%	1
133		6x8 Header - 6' L	EA	1	0%	1
		6x12 Header				
134		6x12 Header - 7' L	EA	2	0%	2
135		6x12 Header - 4' L	EA	2	0%	2
		6x10 Header				
136		6x10 Header 3' L	EA	2	0%	2
137		6x10 Header 10' L	EA	1	0%	1
		2x8 Header				
138		2x8 Header - 6' L	EA	2	0%	2
		Sheathing				
139		(1/2") 4'x8' Plywood Sheathing @ Shear Wall - 1026 SF	EA	32	0%	32
		Rafter				
140		2x6 Roof Rafter @ 24" O.C - 125 SF	LF	64	0%	64
141		2x6 Roof Rafter @ 24" O.C - 4' L	EA	16	0%	16

Building Data Summary

Project ID:	Single Family Homes
Location:	*****
Scope of Work:	Lumber Breakdown - Rough framing
Date:	01/12/2025

Item #	Ref. Sheet #	Item Description	Unit	Quantity	Wastage	Quantity with Wastage
3rd Floor						
Wall Type "Exterior" As; (110 LF, 8'-6" H)						
142		(2"x6") Wood Studs @ 16" O.C.	EA	88	0%	88
143		(4'x8') Plywood Sheathing - 935 SF	EA	29	0%	29
144		(2"x6") Top & Bottom Plate - 10' L	EA	33	0%	33
145		2x4 Interior Wall 8'-6"H	LF	78	0%	78
Wall Type "Interior" As; (78 LF, 8'-6" H)						
146		(2"x4") Wood Studs @ 16" O.C.	EA	60	0%	60
147		(2"x4") Top & Bottom Plate - 10' L	EA	23	0%	23
Rail Cap						
148		2X Railing Cap - 10' L	EA	18	0%	18
Post						
149		4x6 Post 8'-6" H	EA	9	0%	9
150		6x6 Post 8'-6"H	EA	1	0%	1
151		6x8 Post 8'-6" H	EA	5	0%	5
152		4x8 Post 8'-6"H	EA	1	0%	1
153		4x4 Post 8'-6"H	EA	6	0%	6
154		6x6 Post 8'-6"H	EA	1	0%	1
155		2x6 Post 8'-6"H	EA	25	0%	25
156		2x4 Post 8'-6"H	EA	2	0%	2
Joist						
157		14" TJI 230 Floor Joist @ 16" O.C - 608 SF	LF	510	0%	510
158		14" TJI 230 Floor Joist @ 16" O.C - 20' L	EA	23	0%	23
159		14" TJI 230 Floor Joist @ 16" O.C - 10' L	EA	5	0%	5
160		2x10 Roof Rafter @ 24" O.C - 66 SF	LF	36	0%	36
161		2x10 Roof Rafter @ 24" O.C - 4' L	EA	6	0%	6
162		2x10 Roof Rafter @ 24" O.C - 3' L	EA	3	0%	3
163		2x10 Deck Joist @ 16" O.C - 170 SF	LF	138	0%	138
164		2x10 Deck Joist @ 16" O.C - 6' L	EA	23	0%	23
165		2x10 Deck Joist @ 16" O.C -361 SF	LF	288	0%	288
166		2x10 Deck Joist @ 16" O.C - 24' L	EA	12	0%	12
Beam						
6"x14" Flush Beam						
167		6"x14" Flush Beam - 12' L	EA	1	0%	1
168		6"x14" Flush Beam - 18' L	EA	1	0%	1
10"x10" Beam						
169		10"x10" Beam - 14' L	EA	1	0%	1
6"x10" Beam						
170		6"x10" Beam - 10' L	EA	1	0%	1
5-1/4"x14" PSL Beam						
171		5-1/4"x14" PSL Beam - 14' L	EA	1	0%	1
5-1/4" x22" PSL Beam						
172		5-1/4" x22" PSL Beam - 20' L	EA	1	0%	1
3-1/2"x14" PSL Beam						
173		3-1/2"x14" PSL Beam - 18' L	EA	1	0%	1
7"x16" PSL Beam						
174		7"x16" PSL Beam - 13' L	EA	1	0%	1
5-1/4"x9-1/2" PSL Flush Beam						
175		5-1/4"x9-1/2" PSL Flush Beam - 15' L	EA	1	0%	1
5-1/4"x11-7/8" PSL Beam						
176		5-1/4"x11-7/8" PSL Beam - 12' L	EA	1	0%	1
1-3/4"x14" LVL Beam						
177		1-3/4"x14" LVL Beam - 15' L	EA	2	0%	2
178		1-3/4"x14" LVL Beam - 8' L	EA	2	0%	2

Building Data Summary


Project ID:	Single Family Homes
Location:	*****
Scope of Work:	Lumber Breakdown - Rough framing
Date:	01/12/2025

Item #	Ref. Sheet #	Item Description	Unit	Quantity	Wastage	Quantity with Wastage
		Header				
		6x8 Header				
179		6x8 Header - 6' L	EA	1	0%	1
180		6x8 Header -3' L	EA	6	0%	6
		6x10 Header				
181		6x10 Header - 4' L	EA	1	0%	1
182		6x10 Header - 3' L	EA	2	0%	2
183		6x10 Header - 10' L	EA	1	0%	1
		8x8 Header				
184		8x8 Header - 7' L	EA	1	0%	1
		Sheathing				
185		(1/2") 4'x8' Plywood Sheathing @ Shearwall - 892 SF	EA	28	0%	28
		Roof Framing				
		Post				
186		4x6 Post 8'-6"H	EA	2	0%	2
187		4x8 Post 8'-6"H	EA	1	0%	1
188		4x4 Post 8'-6" H	EA	5	0%	5
		Header				
		6x8 Header				
189		6x8 Header - 3' L	EA	4	0%	4
190		6x8 Header - 4' L	EA	1	0%	1
191		6x8 Header - 2' L	EA	1	0%	1
		6x6 Header				
192		6x6 Header - 4' L	EA	1	0%	1
193		6x6 Header - 3' L	EA	1	0%	1
		6x10 Header				
194		6x10 Header - 8' L	LF	8	0%	8
195		6x10 Header - 8' L	EA	1	0%	1
		Sheathing				
196		(1/2") 4'x8' Plywood Sheathing @ Shear Wall - 106 SF	EA	3	0%	3
		Rafter				
197		1-3/4" x11-7/8" LVL Roof Rafter @ 16" O.C - 602 SF	LF	465	0%	465
198		1-3/4" x11-7/8" LVL Roof Rafter @ 16" O.C - 23' L	EA	20	0%	20
199		1-3/4" x11-7/8" LVL Roof Rafter @ 16" O.C - 5' L	EA	1	0%	1
200		1-3/4"x11-7/8" LVL Roof Rafter @ 24" O.C - 348 SF	LF	188	0%	188
201		1-3/4"x11-7/8" LVL Roof Rafter @ 24" O.C - 24' L	EA	7	0%	7
202		1-3/4"x11-7/8" LVL Roof Rafter @ 24" O.C - 20' L	EA	1	0%	1

Lumber

VERACITY ESTIMATING

WIDE STAR Series



INSTALLATION INSTRUCTIONS

WARNING: Read all instructions carefully before attempting to install or use this product. Failure to follow instructions may result in property damage, personal injury, or death.

SAFETY: Turn off power to the area where you are working. Do not touch the fixture or the wiring while the power is on. Use proper safety techniques when working with electrical wiring.

INSTALLATION: Mount the fixture to a solid surface. Do not use the fixture on a surface that is not rated for the weight of the fixture. Do not use the fixture in a location where it will be exposed to moisture or other environmental conditions that are not specified in the instructions.

WARRANTY: The manufacturer warrants that the fixture is free from defects in materials and workmanship for a period of one year from the date of purchase.

MADE IN THE USA



TAPER

INSTALLATION INSTRUCTIONS

Read all instructions carefully before attempting to install or use this product. Failure to follow instructions may result in property damage, personal injury, or death.

WARNING: Turn off power to the area where you are working. Do not touch the fixture or the wiring while the power is on. Use proper safety techniques when working with electrical wiring.

INSTALLATION: Mount the fixture to a solid surface. Do not use the fixture on a surface that is not rated for the weight of the fixture. Do not use the fixture in a location where it will be exposed to moisture or other environmental conditions that are not specified in the instructions.

WARRANTY: The manufacturer warrants that the fixture is free from defects in materials and workmanship for a period of one year from the date of purchase.

- PROJECT DETAILS:**
- Mount to a solid surface
 - Suitable for use in wet locations (check local codes as defined by NEC and IBC. Check with Authority Having Jurisdiction (AHJ) for local requirements.)
 - Available for both indoor and outdoor use
 - AHJ approved
 - Energy efficient construction (check fixture for a mark indicating energy efficiency or range of operating temperatures)
 - For more information on how to control your landscape lighting see the Lighting Home Automation App, visit www.b-k-lighting.com
 - LED complete construction with a 10-year limited warranty



VOLT® G2 BuddyPro™ Beacon Brass LED Pack Light

Compact, solid brass pack light with a beacon style glass lens (ideal for directional illumination along walkways, steps, and more)

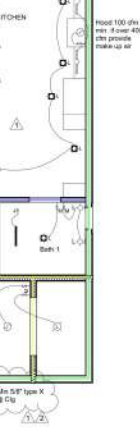
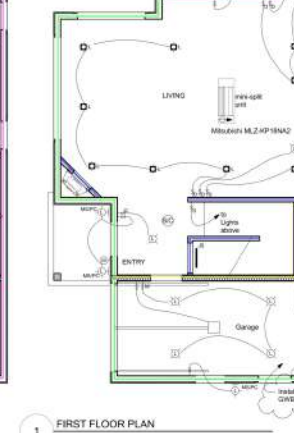
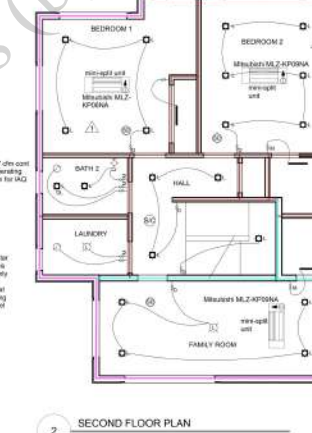
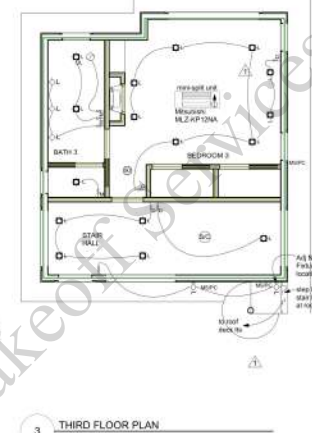
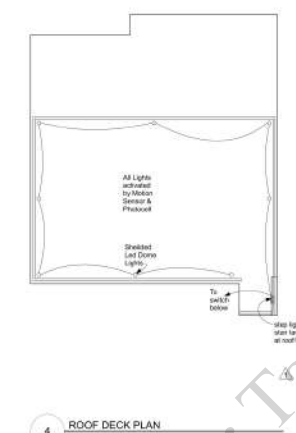
- Can be surface mounted or recessed for use as a directional light
- IP67 rating for weathered areas and water immersion
- Choose between 2200K (100lm), 2700K (170lm), or 3000K (130lm)
- 3 customizable lenses (included)
- Solid brass construction with a precision brass finish
- Lifetime Warranty

LIGHTING SYMBOLS KEY

SW LED	SPRINKLER HEAD	JAMB SWITCH
Undermount Strip LED	DOORBELL BUZZER	MSPC MOTION SENSOR & PHOTOCELL
Ceiling Mounted Fan Light	DOORBELL CHIME	CEILING MOUNTED LED
Flush Strip Light - LED	DAMP LOCATION	WALL MOUNTED LED
Adjustable Track Spotlights	WP WEATHER PROOF - GFCI	Recessed LED accessible from below the ceiling
Emergency Exit - At least two in the Freely Egressable Area (FEA)	EXISTING	CEILING JOIST BRACKET
HEAT RECOVERY VENTILATOR	M Manually Operated Tinned Switch - Vacancy Sensor	AUDIO VISUAL KEYPAD
SMALL SENSORS/PHOTOCELLS/RETRORADIATION SIGNAL DETECTOR	SWITCH	SPEAKER
SMOKE & CARBON MONOXIDE DETECTOR	D DIMMER SWITCH	WIREMESH WOOD/PLUG/SLD SYSTEM (WIREMESH UNDER SLATS, JOISTS)
THREE WIRE SWITCH		

SHIELDED DOME LIGHTS FOR ROOF DECK

- ALL LIGHTING SHALL BE HIGH-EFFICIENCY LED OR FLUORESCENT. LED LIGHTING SYSTEM AND GUARD LAMP HOLDERS SHALL BE LISTED BY ENERGY COMMISSION AND SHALL MEET THE REQUIREMENTS OF TABLE 510.6.
- All permanently installed luminaires in bedrooms, laundry rooms, garages and utility rooms shall meet the 2022 Building Energy Efficiency Standards, including the requirements for a range of one high-efficiency luminaire in each of these rooms, controlled by a vacancy sensor.
- Luminaires represent into ceilings shall meet all of the following: Listed for zero-glare; adjustable; listed that certified for luminaires to ceiling with a mounting height that 2022 IBC 703.2.1.2, listed with a glare or color, other requirements shall be provided to be made accessible from below the ceiling without cutting. Note: in this ceiling, shall not contain screw base sockets, and shall contain light trough that comply with IBC.
- All recess lighting shall be controlled by a manual ON and OFF switch that does not operate to ON and one of the following: controlled by photo cell and motion sensor; photo control and automatic switch control; subterranean time clock; or energy management control system (EMCS) 150.0.3.
- No controls shall bypass a dimmer or vacancy sensor function when that dimmer or vacancy sensor has been installed to comply with 150.0.3.
- Smoke photovoltaic/battery smoke alarms are required in all areas/rooms used for sleeping, in the immediate vicinity outside these areas/rooms, and in both the top and bottom portion of the interior staircase. Smoke alarms installed within 20 ft of a kitchen, bathroom or room containing a fireplace or wood burning stove shall be of the photoelectric type.
- Carbon Monoxide and smoke alarms shall receive their primary power from the building wiring, be equipped with battery back-up and be interconnected in such a manner that the activation of one alarm will activate all smoke and carbon monoxide alarms.
- For placement of smoke alarms and carbon monoxide alarms in rooms with variations in ceiling height (vaulted, sloped, etc.) refer to the manufacturers guidelines for proper placement.
- Exhaust Fans and Lights are required to have separate switches
- Each Exhaust Fan shall be ENERGY STAR compliant, min 30 cfm for intermittent ventilation, and equipped with a functional and manual override control.
- The only CAT Rated Recessed Fixtures. Adhere to wall rating limit of each fixture.



Mattijoly Thayer Architecture
440 Church Street
San Francisco, CA 94114
415-431-2848 www.mattijoly.com

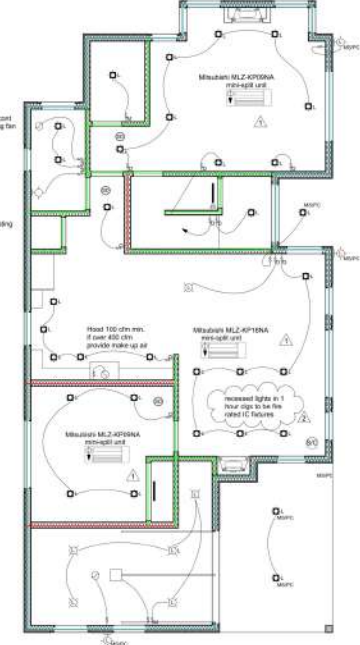
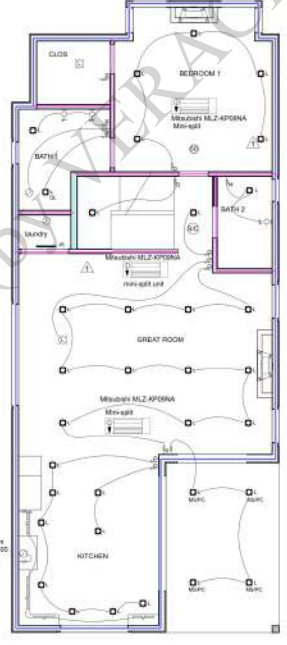
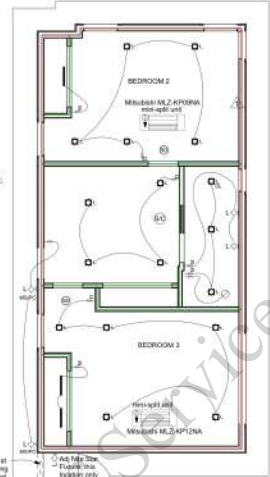
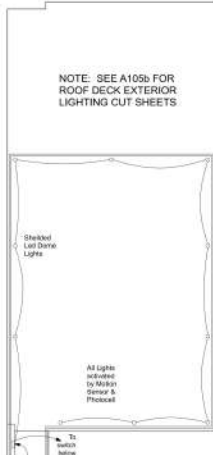
LUMBER TAKEOFF SERVICES
by Veracity Estimating

HOUSE 1 LIGHTING PLANS
Scale: 1/4" = 1'-0"

A105b

LIGHTING SYMBOLS KEY		
Step LED		
Undercabinet Step LED	(S)	EXISTING
Ceiling Mounted Fan Light	M	Manually Operated Time Switch - Vacancy Sensor
Ceiling Step Light - LED	SD	DRINKER SWITCH
Adjustable Track Spot Lighting	T	THREE WAY SWITCH
EXISTING FAN - PLEASE SEE E105 Energy Star table for CFM, watt, humidity		JAMB SWITCH
HEAT RECOVERY VENTILATOR	HVR	MOTION SENSOR & PHOTOCELL
TOTAL SENSOR PHOTOELECTRIC/RECONIZATION SMOKE DETECTOR	SCD	CEILING MOUNTED LED
SMOKE & CARBON MONOXIDE DETECTOR	SCM	WALL MOUNTED LED
SPRINKLER HEAD	SH	Recessed LED accessible from below the ceiling
DOORBELL CHIME	DC	IC, AF, CG 200 compliant
DOORBELL BUTTON	DB	SECURITY KEYPAD
DAMP LOCKING	DL	AUDIO VISUAL KEYPAD
WEATHER PROOF - GFCI	WP	SPEAKER
		WIRELESS Z-WAVE / R / UNIVERSAL SYSTEM
		INWARD / UNDER / UNDER / UNDER

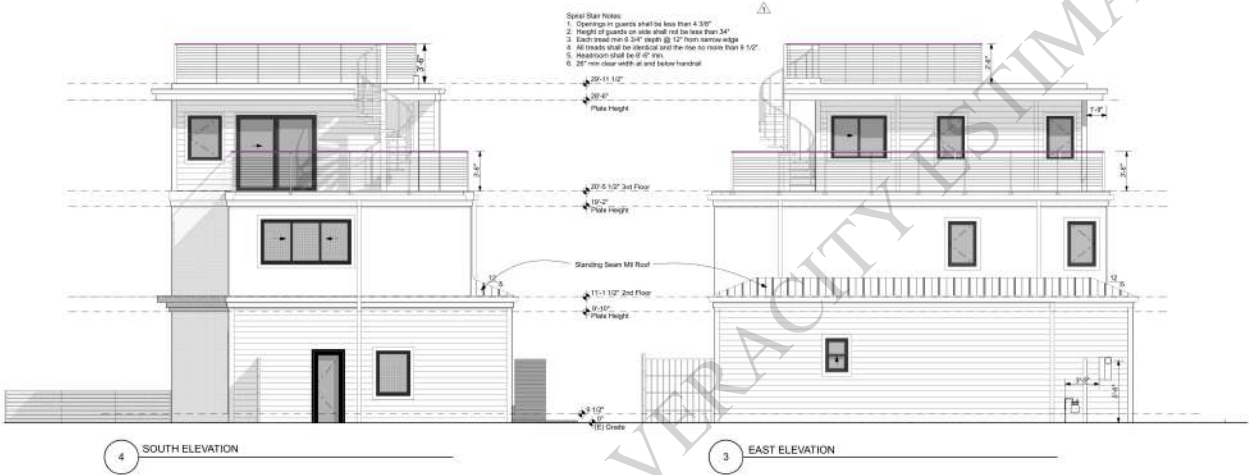
- ALL LIGHTING SHALL BE HIGH EFFICACY LED OR FLUORESCENT. LED LIGHTING SYSTEM AND GU24 LAMP HOLDER SHALL BE LISTED BY ENERGY COMMISSION AND SHALL MEET THE REQUIREMENTS OF TABLE E105-C.
- All permanently installed luminaires in bathroom, laundry room, garage and utility rooms shall meet the 2022 Building Energy Efficiency Standards, including the requirement for a minimum of one high efficiency luminaire in each of these spaces, controlled by a vacancy sensor.
- Luminaires recessed into ceiling shall meet all of the following: Lined ceiling cavities (except for insulation) shall have a minimum clearance with a minimum gap less than 2.0 CMH at 70 percent, sealed with a gasket or cork, allow 30 percent and maintenance to be readily accessible from below without stepping; holes in the ceiling shall not contain screw base sockets, and shall contain light fixtures that comply with A108.
- All exterior lighting shall be controlled by a manual ON and OFF switch that does not override to ON and one of the following: controlled by photo cell and motion sensor, photo control and automatic switch control, astronomical time clock or energy management control system (EMCS) 10000.
- No controls shall bypass a diverter or vacancy sensor function unless the diverter or vacancy sensor has been installed to comply with 105.03A.
- Dual Sensor photoelectric motion smoke alarms are required in all areas controlled by stepping, if the immediate vicinity outside these areas is not protected by a double top and bottom loading of five linear stainless steel springs (valued within 20 lb. of a kitchen, bathroom or room containing a bedroom), or a double loading shall be of the photoelectric type.
- Carbon Monoxide and smoke alarms shall receive their primary power from the building wiring, be equipped with battery back-up and be interconnected in such a manner that the activation of one alarm will activate all smoke and carbon monoxide alarms.
- For placement of smoke alarms and carbon monoxide alarms in rooms with vaulted or sloping ceiling (sloped, pitched, etc.) refer to the manufacturer's guidelines for proper placement.
- Exterior Fans and Lights are required to have separate switches.
- Each Exhaust Fan shall be ENERGYSTAR compliant, min 50 cfm for intermittent ventilation, and equipped with a humidistat and manual humidity control.
- Use only IAT Rated Recessed Fixtures. Access to vent piping (not of wood) is required.
- Recessed lights in 1" ceiling to be E105 Fire Rated IC Ratings or Approval E-06.



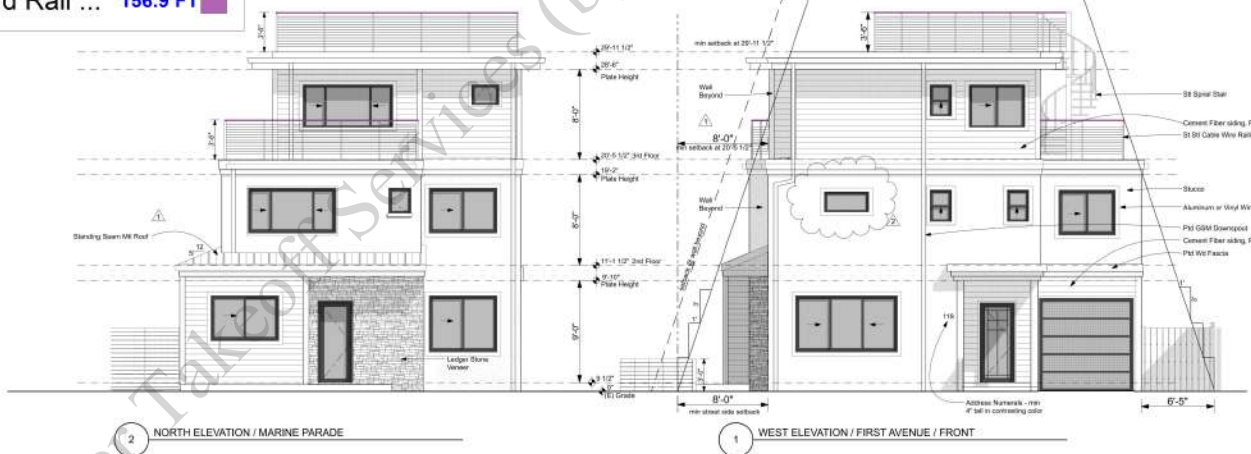
- 2x6 Exterior Wall 8'-6"
- 2x6 Interior Wall 8'-6"H
- 2x4 Interior Wall 8'-6"H
- 2x6 Exterior Wall 9'-6"
- 2x4 Interior Wall 9'-6"H
- 2x6 Interior Wall 9'-6"H
- 2x6 Exterior Wall 8'-6"
- 2x4 Interior Wall 8'-6"H



10/10/23	PRE-APP
12/08/23	Permit
03/08/24	Permit
03/10/24	Permit
05/10/24	Permit
06/03/24	Permit



2X Guard Rail ... 156.9 FT



Matthew Thayer Architecture
 840 Church Street
 San Francisco, CA 94114
 415-431-2848 www.mtharch.com



LUMBER TAKEOFF SERVICES
 by Velocity Estimating

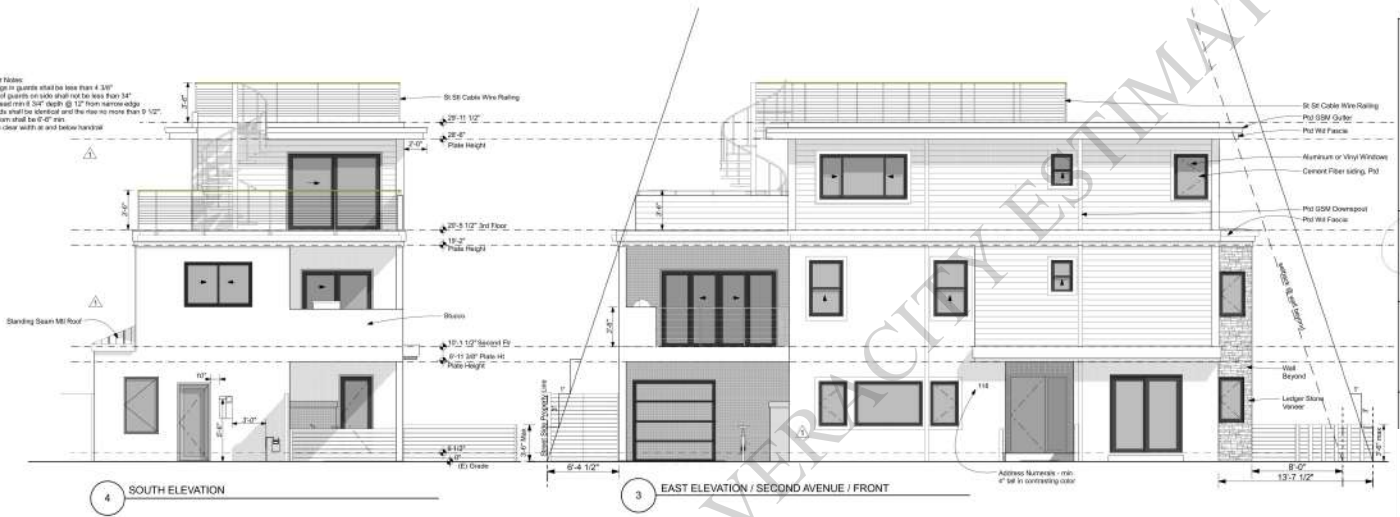
DATE	DESCRIPTION
10/10/23	PRE-APP
02/01/24	SET
02/01/24	Planning Permit
02/01/24	Planning Permit Review
03/10/24	Building Permit
05/03/24	Plan Check Review
06/03/24	Plan Check Review

HOUSE 1 ELEVATIONS

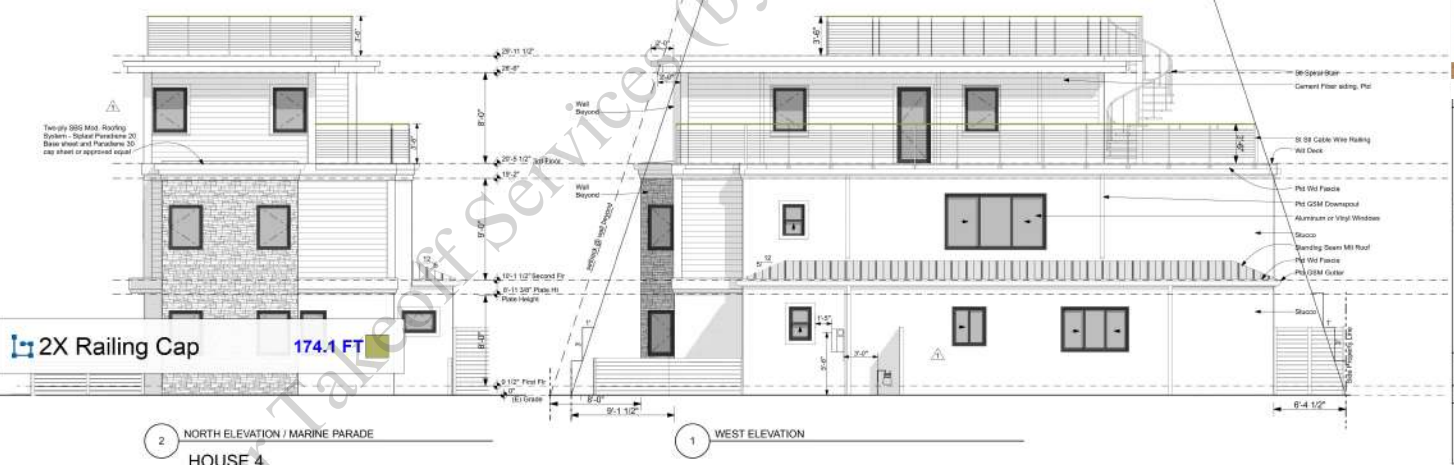
Scale: 1/4" = 1'-0"

A203

- Special Day Notes:**
1. Clearings in quarters shall be less than 4.33"
 2. Height of guards on sides shall not be less than 34"
 3. Each handrail shall be 1 1/2" high @ 12" from narrow edge
 4. All handrails shall be vertical and the rise no more than 9 1/2"
 5. Handrails shall be 4" dia.
 6. 2" not clear width in and below handrail



Matthew Thayer Architecture
 840 Church Street
 San Francisco, CA 94114
 415-431-2848 www.mtharch.com



LUMBER TAKEOFF SERVICES
 by Veracity Estimating

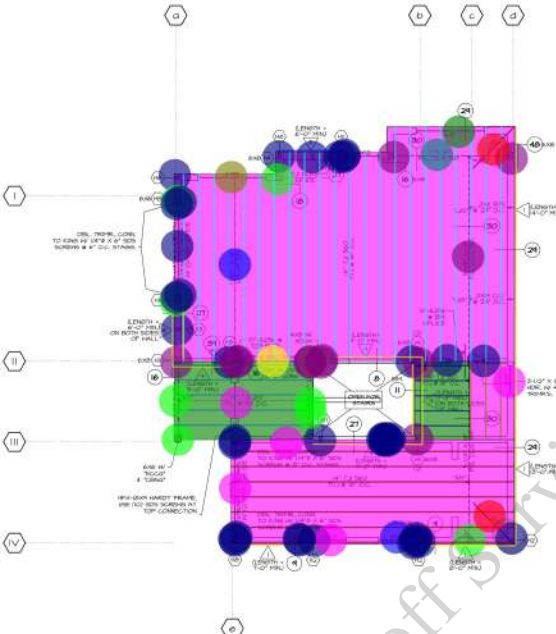
13101023	PRE-APP
13101024	APP
13101025	Plan
13101026	Plan/Permit
13101027	Plan/Permit
13101028	Building Permit
13101029	Plan/Check
13101030	Plan/Check
13101031	Plan/Check

HOUSE 4 & ADU ELEVATIONS
 Scale: 1/4" = 1'-0"

A205

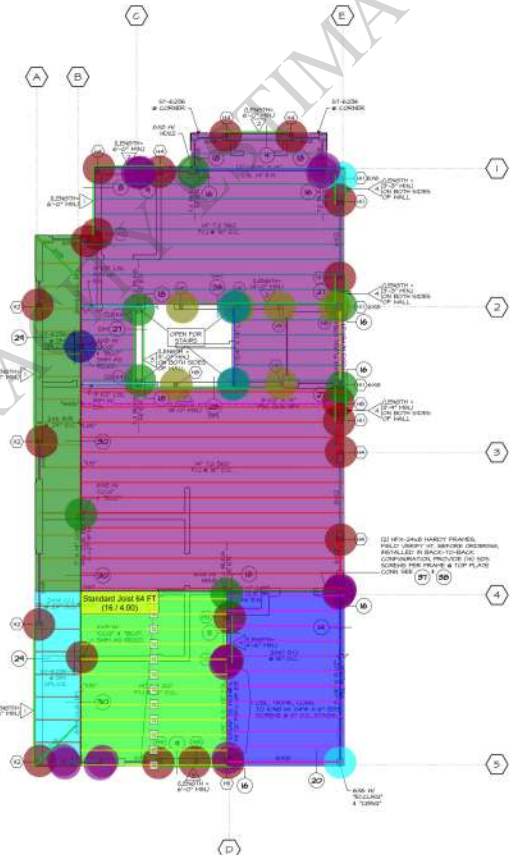
MEMORANDUMS DEPICTED HEREIN ARE THE SOLE PROPERTY OF BRAN DTOTON CONSULTING ENGINEER, AND MAY NOT BE REPRODUCED IN ANY FORM WITHOUT ITS WRITTEN PERMISSION.

NOTE: FINISH JOISTED SIDING SHALL BE USED FOR ALL NON-STRUCTURAL VERTICAL EXTERIOR WALLS



2ND FLR. FRMG. PLAN - HOUSE 1
SCALE: 1/4" = 1'-0"

• 4x8 Post 9'-6"H	14.0
• 6x8 Post 9'-6"H	5.0
• 6x8 Post 9'-6"H	5.0
• 4x8 Post 9'-6"H	1.0
• 6x12 Header 3' L	1.0
• 6x8 Header 3' L	4.0
• 6x12 Header 6' L	1.0
• 5-1/4"x11-7/8" PSL Beam 8' L	1.0
• 5-1/4"x14" PSL Beam 34' L	1.0
• 7"x14" PSL Beam 10'-0" L	1.0
• 2"x8" Beam 5' L	2.0
• 1-3/4"x14" LVL Beam 7' L	2.0
• 4"x12" Beam 6' L	1.0
• 1-3/4"x14" LSL Beam	1.0
• 14" TJI 560 Floor Joist @ 16" O.C.	821.0 SQ FT
• Standard Joist	811.2 FT
• 14" TJI 210 Floor Joist @ 16" O.C.	117.7 SQ FT
• Standard Joist	26.8 FT
• Standard Joist	24.2 FT
• Standard Joist	91.4 FT
• 6"x14" Flush Beam 7' L	1.8
• 1/2" Plywood Sheathing @ Shear Wall 9'H	103.5 FT
• 5/8" Plywood Sheathing @ Shear Wall 9'H	83.4 FT
• 6"x12" Beam 9' L	1.0
• 6x8 Post 5'-6"H	2.0
• 4x8 Post 8'-6"H	22.0
• 6x8 Post 8'-6"H	7.0
• 4x4 Post 6'-6"H	6.0
• 4x8 Post 6'-6"H	1.0
• 2x8 Post 8'-6"H	16.0
• 2x4 Post 8'-6"H	4.0
• 1/2" Plywood Sheathing @ Shear Wall 9'H	113.0 FT
• 6x8 Header	41.0 FT
• 6x12 Header	22.0 FT
• 6x10 Header	16.0 FT
• 2x8 Header	12.0 FT
• 6x14 Flush Beam	7.0 FT
• 1-3/4"x14" LVL Beam	36.0 FT
• 3-1/2"x14" PSL Beam	23.0 FT
• 3-1/2" LSL Beam	14.0 FT
• 8x14 Beam	35.0 FT
• 7x14 Beam	36.0 FT
• 5-1/4"x11-7/8" PSL Beam	6.0 FT
• 5-1/4"x9-1/2" PSL Beam	14.6 FT
• 14" TJI 560 Floor Joist @ 16" O.C.	826.1 SQ FT
• Standard Joist	326.0 FT
• Standard Joist	336.0 FT
• 14" TJI 210 Floor Joist @ 16" O.C.	198.9 SQ FT
• Standard Joist	155.2 FT
• 2x10 Deck Joist @ 16" O.C.	159.3 SQ FT
• Standard Joist	132.0 FT
• 2x14 Ceiling Joist @ 24" O.C.	61.5 SQ FT
• Standard Joist	31.3 FT
• 2x8 Roof Rafter @ 24" O.C.	126.7 SQ FT
• Standard Joist	64.0 FT
• 2x8 Post 9'-6"H	21.0
• 4x4 Post 9'-6"H	6.0



2ND FLR. FRMG. PLAN - HOUSE 4
SCALE: 1/4" = 1'-0"

REVISION	BY
5/2/24	BD
6/7/24	BD

FILE: 190-F1-R2

LUMBER TAKEOFF SERVICES
by Veracity Estimating

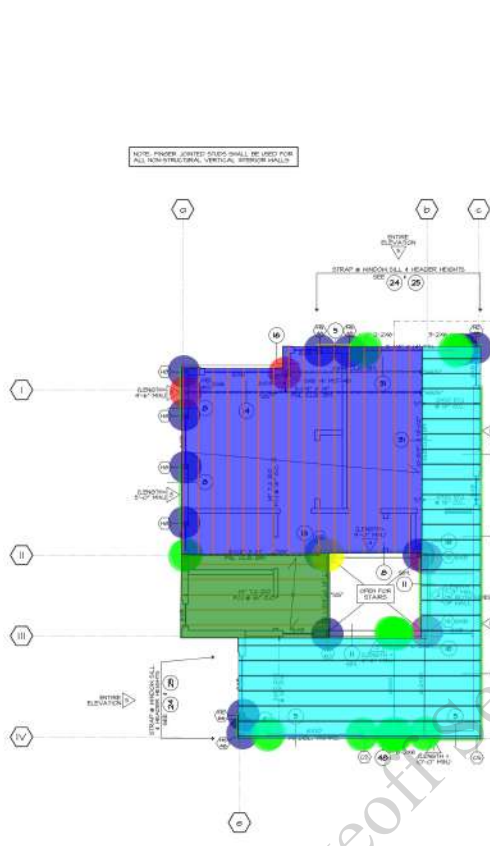
SECOND FLOOR FRAMING PLAN

JOB NO: 190
DATE: 5/22/24
SCALE: AS NOTED
DRAWN BY: BD
CHECKED BY: BD

S-2
OF 3 SHEETS

MEMORANDUMS DEPICTED HEREIN ARE THE SOLE PROPERTY OF BRAN DOTSON CONSULTING ENGINEER, AND MAY NOT BE REPRODUCED IN ANY FORM WITHOUT ITS WRITTEN PERMISSION.

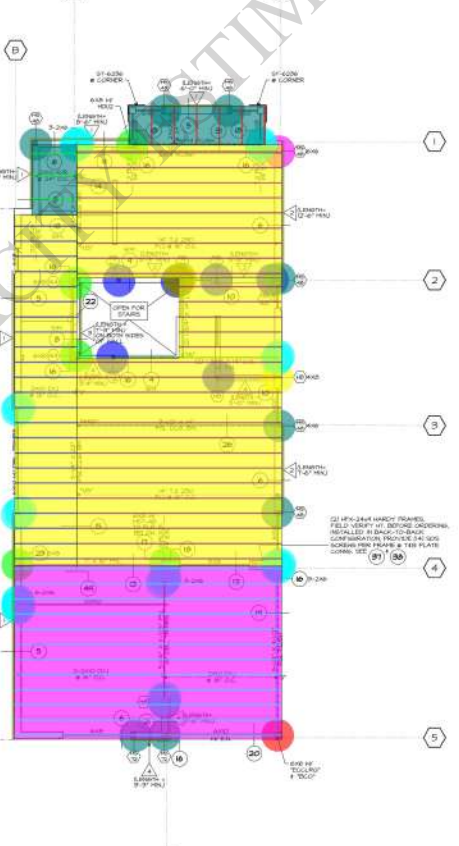
NOTE: FINISH, SCHEDULE COLORS SHALL BE USED FOR ALL NON-STRUCTURAL VERTICAL SURFACES UNLESS NOTED OTHERWISE.



3RD FLR. FRMG. PLAN - HOUSE 1
SCALE: 1/4" = 1'-0"

- 4x6 Post 8'-6" H
- 6x8 Post 8'-6" H
- 4x4 Post 8'-6" H
- 6x6 Post 8'-6" H
- 2x6 Post 8'-6" H
- 2x4 Post 8'-6" H
- 6x8 Header
- 6x10 Header
- 10x10 Beam
- 2x10 Beam
- 10-3/4"x13-1/2" Beam
- 6x14 Beam
- 5-1/4"x14" PSL Beam
- 3-1/2"x14" PSL Beam
- 1-3/4"x14" LVL Beam
- 5-1/4"x14" PSL Beam
- 1/2" Plywood Sheathing 9' H
- 5/8" Plywood Sheathing
- 14" TJI 210 Floor Joist 16" O.C
- Standard Joist
- 2x10 Deck Joist @ 16" O.C
- Standard Joist
- 14" TJI Floor Joist @ 16" O.C
- Standard Joist
- 4x6 Post 9'-6" H
- 6x8 Post 9'-6" H
- 6x8 Post 9'-6" H
- 4x8 Post 9'-6" H
- 4x4 Post 9'-6" H
- 6x6 Post 9'-6" H
- 2x6 Post 9'-6" H
- 6x8 Header
- 6x10 Header
- 2x4 Post 9'-6" H
- 6"x14" Flush Beam
- 8x8 Header
- 10x10 Beam
- 6x10 Beam
- 5-1/4"x14" PSL Beam
- 5-1/4" x22" PSL Beam
- 3-1/2"x14" PSL Beam
- 7"x16" PSL Beam
- 5-1/4"x9-1/2" PSL Flush Beam
- 5-1/4"x11-7/8" PSL Beam
- 1-3/4"x14" LVL Beam
- 1/2" Plywood Sheathing 8'-6" H
- 14" TJI 230 Floor Joist @ 16" O.C
- Standard Joist
- 2x10 Roof Rafter @ 24" O.C
- Standard Joist
- Standard Joist
- 2x10 Deck Joist @ 16" O.C
- Standard Joist
- Standard Joist
- 2x10 Deck Joist @ 16" O.C
- Standard Joist

12.0	37.0 FT
2.0	9.0 FT
1.0	9.0 FT
2.0	18.0 FT
25.0	19.0 FT
2.0	13.0 FT
37.0 FT	21.0 FT
290.0 FT	12.0 FT
322.2 SQ FT	14.0 FT
268.0 FT	8.0 FT
97.0 SQ FT	89.7 FT
70.0 FT	3.1 FT
9.0	371.3 SQ FT
1.0	290.0 FT
5.0	322.2 SQ FT
1.0	268.0 FT
6.0	97.0 SQ FT
1.0	70.0 FT
25.0	9.0
24.0 FT	1.0
20.0 FT	5.0
2.0	1.0
30.0 FT	6.0
7.0 FT	1.0
14.0 FT	25.0
10.0 FT	24.0 FT
13.0 FT	20.0 FT
19.0 FT	2.0
13.0 FT	30.0 FT
15.0 FT	7.0 FT
11.0 FT	14.0 FT
44.0 FT	10.0 FT
104.4 FT	13.0 FT
607.9 SQ FT	18.0 FT
487.0 FT	13.0 FT
65.6 SQ FT	15.0 FT
24.0 FT	11.0 FT
12.0 FT	44.0 FT
169.8 SQ FT	104.4 FT
138.0 FT	607.9 SQ FT
360.6 SQ FT	487.0 FT
288.0 FT	65.6 SQ FT



3RD FLR. FRMG. PLAN - HOUSE 4
SCALE: 1/4" = 1'-0"

REVISION

5/2/24	BD
6/7/24	BD

FILE: 1801-F2-R2

BRAN DOTSON CONSULTING ENGINEER
1801 FLORENCE AVE. SUITE 100
DALLAS, TX 75201
PH: 972.382.0000
WWW.BRAN-DOTSON.COM

LUMBER TAKEOFF SERVICES

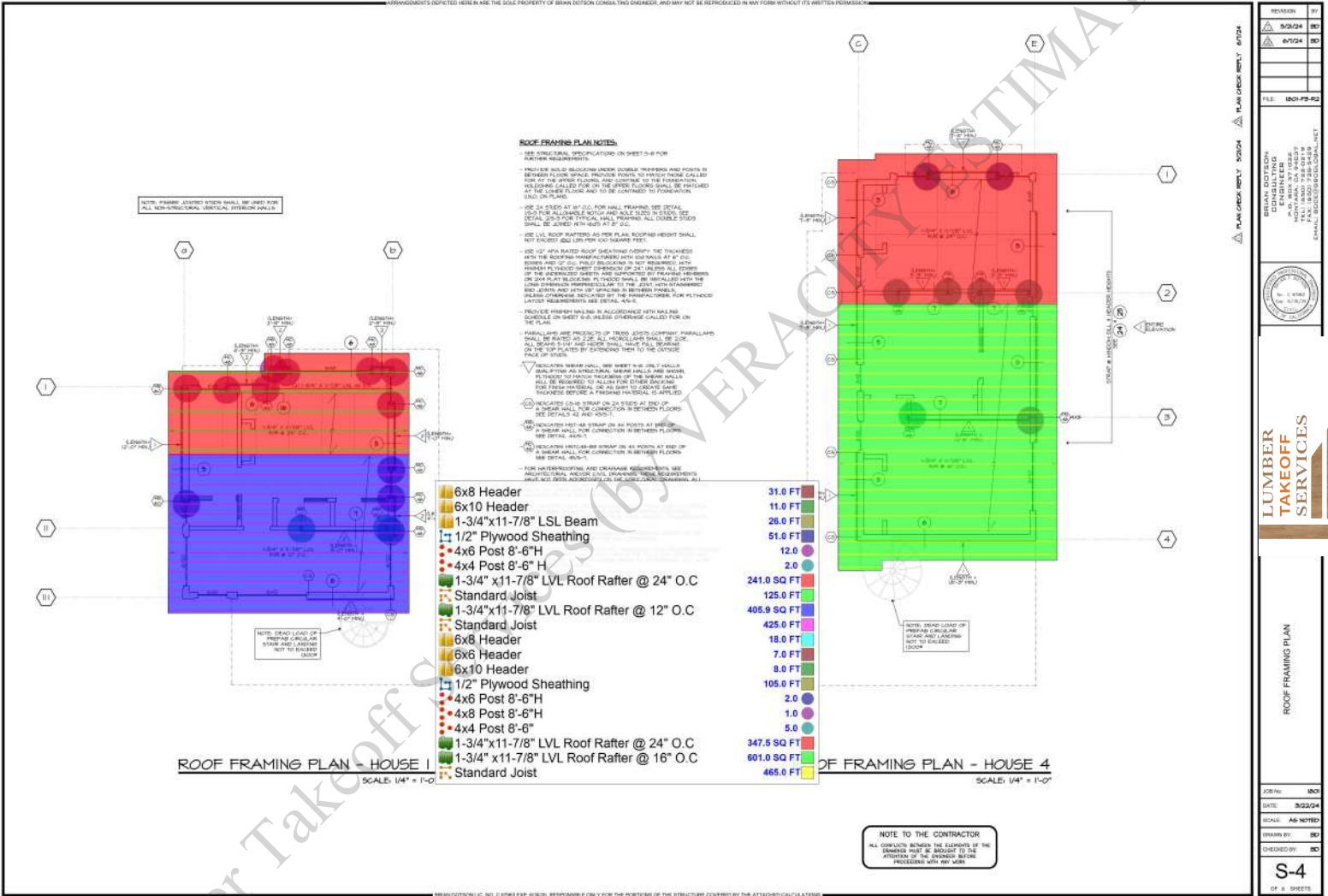
by Veracity Estimating

THIRD FLOOR FRAMING PLAN

JOB NO: 1801
DATE: 5/2/24
SCALE: AS NOTED
DRAWN BY: BD
CHECKED BY: BD

S-3
OF 3 SHEETS

BRAN DOTSON LLC, NO. C 07993 EXP. 03/26, RESPONSIBLE ONLY FOR THE PORTIONS OF THE STRUCTURE COVERED BY THE ATTACHED CALCULATIONS.



REVISION

DATE

BY

NOI-PS-R2

DATE

BY

DATE

BY

DATE

BY

LUMBER TAKEOFF SERVICES

by Velocity Estimating